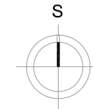
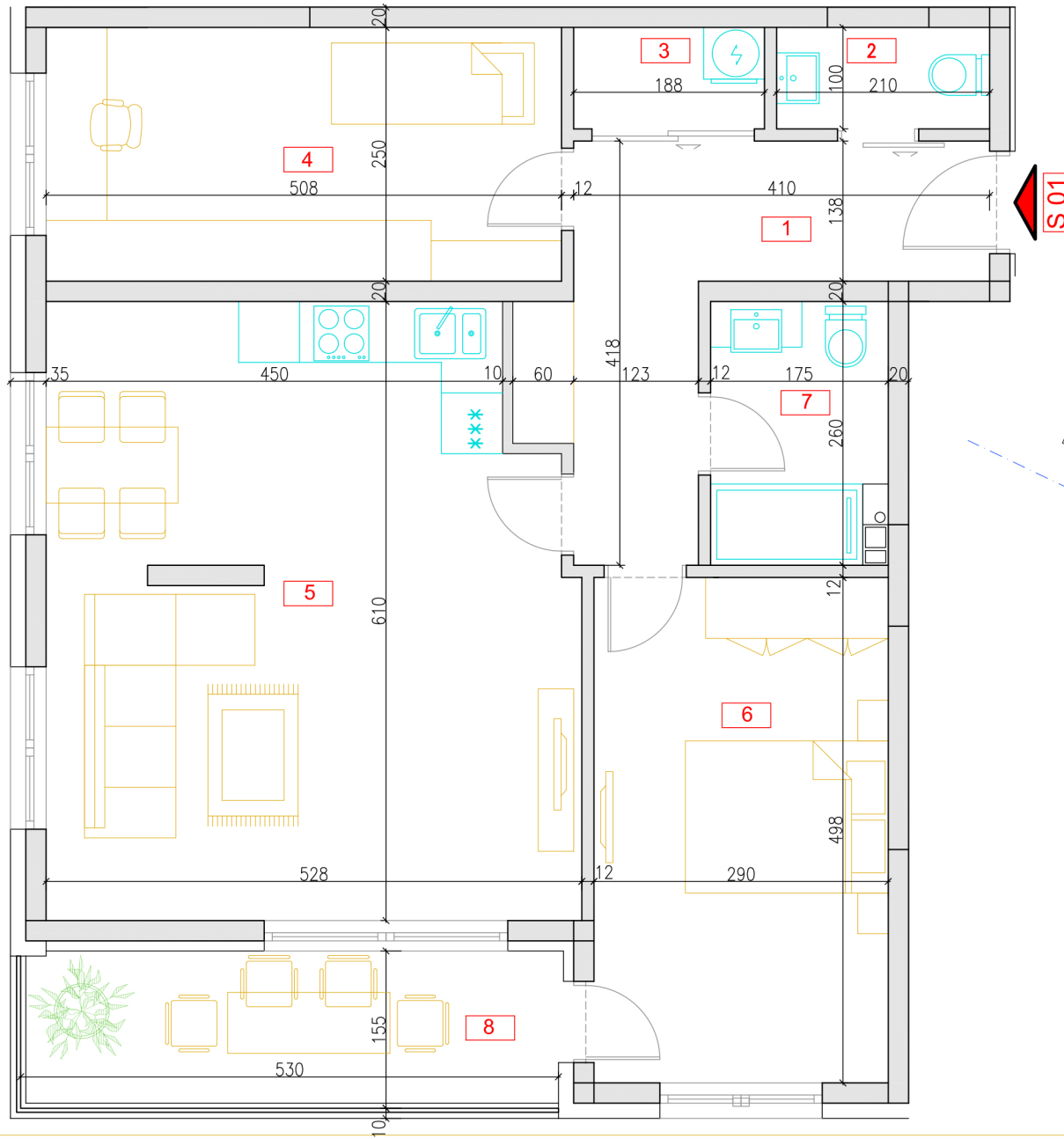


STAN 01



S 01 (S 14 = S 27 = S 40) - STAN 1 (trosoban stan)		
BR.	NAMENA PROSTORIJE	P (m ²)
1	ULAZNI HODNIK	9,64
2	WC	2,04
3	OSTAVA	1,86
4	SOBA	12,32
5	DN. BORAVAK, TRPEZ I KUHINJA	29,67
6	SOBA	14,01
7	KUPATILO	4,22
8	TERASA	8,25
UKUPNO:		82,01